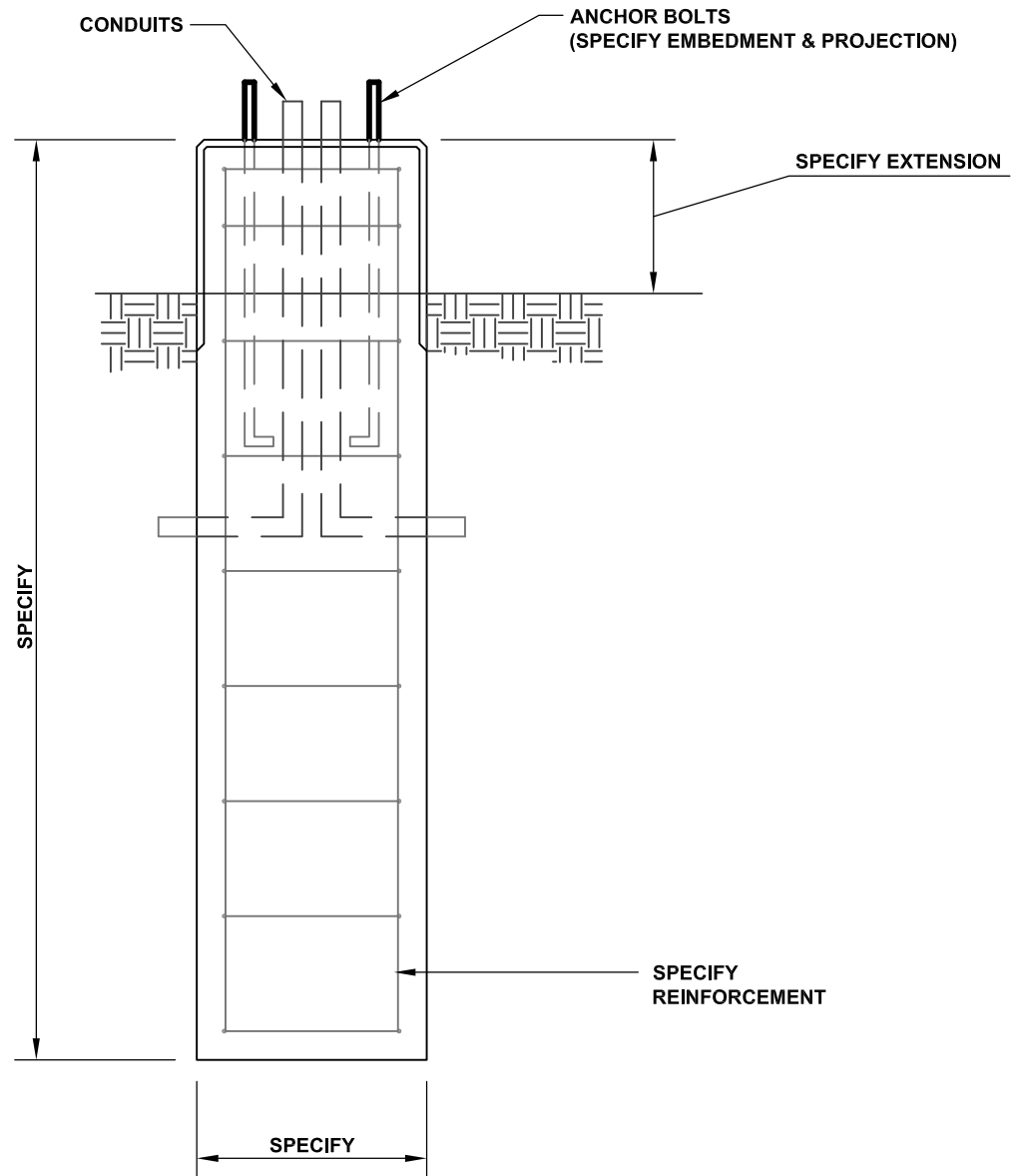


DURASTONE

150 HIGGINSON AVENUE - LINCOLN, RI 02865 - Phone (401) 723-7100 - Fax (401) 723-6866

SQUARE LIGHTBASE



ELEVATION

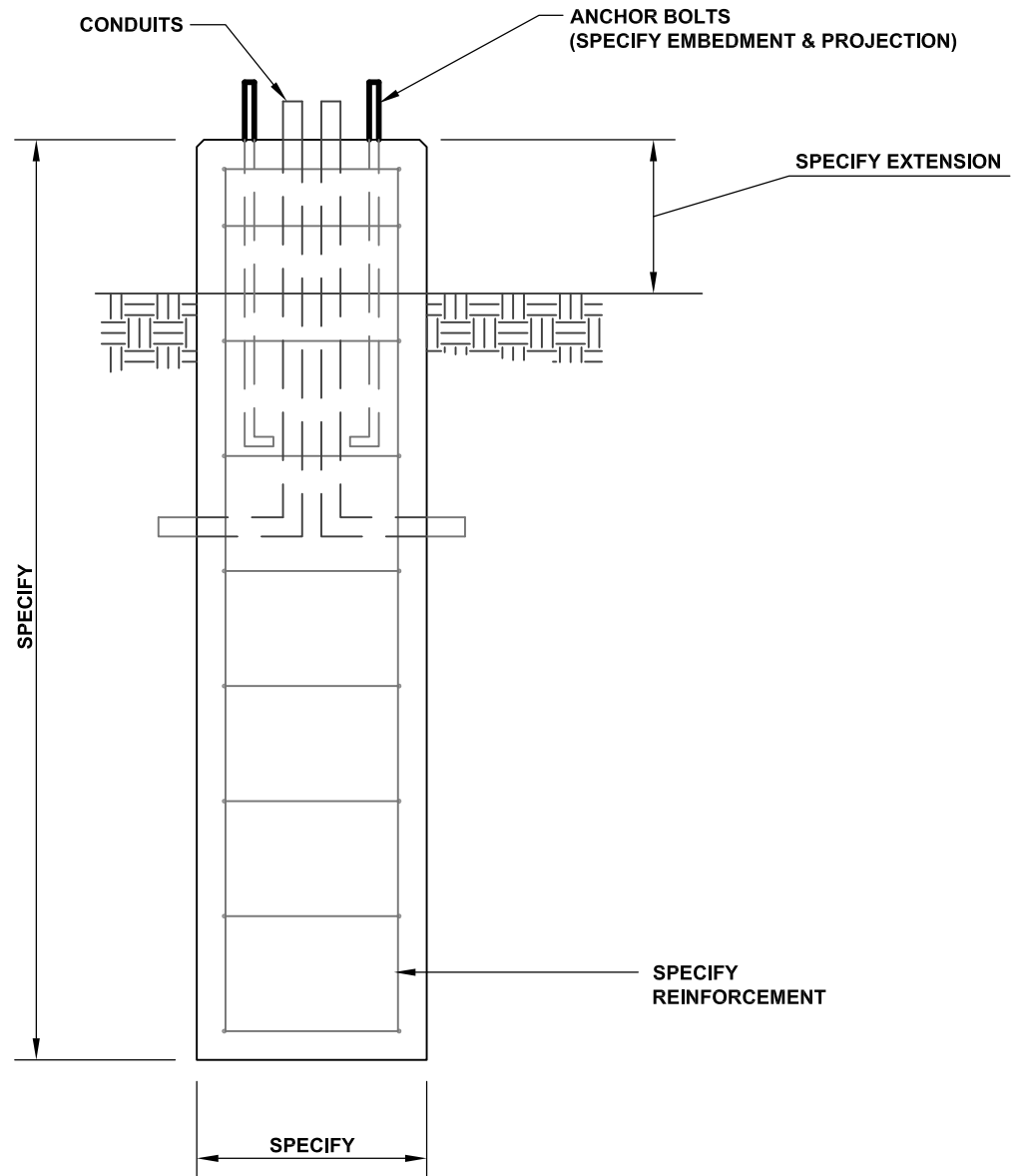
STANDARD SPECIFICATIONS

1. MINIMUM CONCRETE COMPRESSIVE STRENGTH: $f'_c = 3,500$ PSI.
2. DESIGN & DETAILING CODE: ACI318 (UNLESS OTHERWISE SPECIFIED).
3. REINFORCEMENT: ASTM A615 GRADE 60, MINIMUM 3" COVER.
4. SMOOTH FORM FINISH.
5. WIDTH & LENGTH AS REQUIRED.
6. CONDUIT & EMBEDMENTS AS REQUIRED.
7. ANCHOR BOLTS AND CONDUIT FURNISHED BY CONTRACTOR.

DURASTONE

150 HIGGINSON AVENUE - LINCOLN, RI 02865 - Phone (401) 723-7100 - Fax (401) 723-6866

ROUND LIGHTBASE



ELEVATION

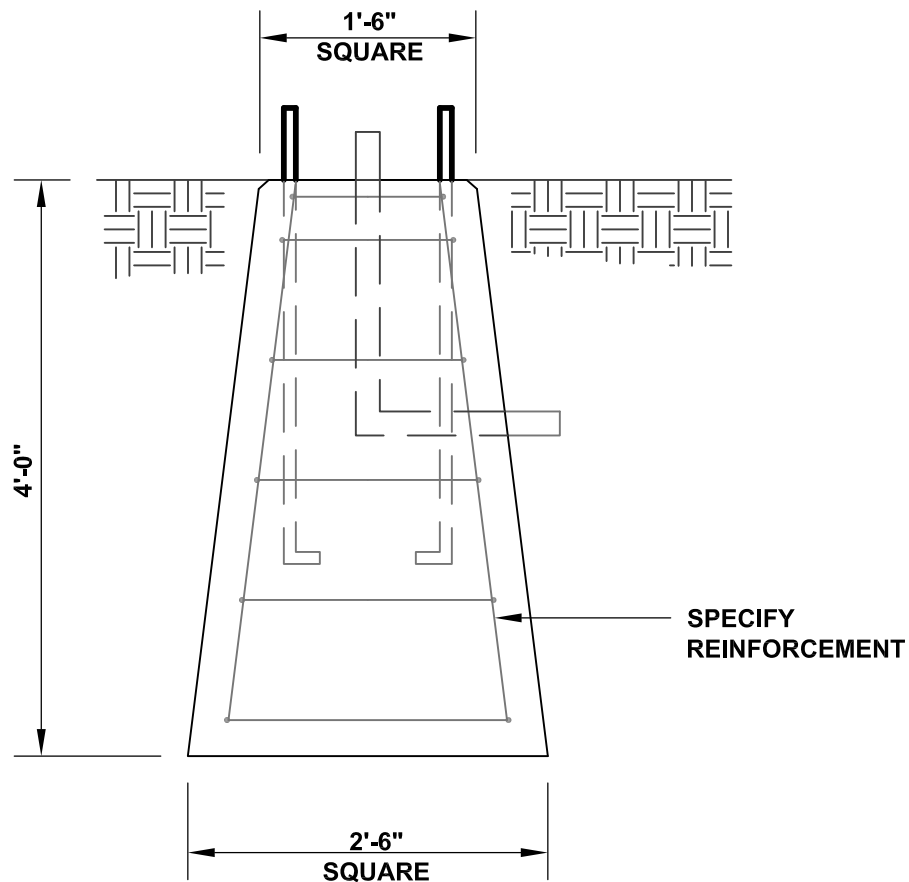
STANDARD SPECIFICATIONS

1. MINIMUM CONCRETE COMPRESSIVE STRENGTH: $f'_c = 3,500$ PSI.
2. DESIGN & DETAILING CODE: ACI318 (UNLESS OTHERWISE SPECIFIED).
3. REINFORCEMENT: ASTM A615 GRADE 60, MINIMUM 3" COVER.
4. SMOOTH FORM FINISH.
5. DIAMETER & LENGTH AS REQUIRED.
6. CONDUIT & EMBEDMENTS AS REQUIRED.
7. ANCHOR BOLTS AND CONDUIT FURNISHED BY CONTRACTOR.

DURASTONE

150 HIGGINSON AVENUE - LINCOLN, RI 02865 - Phone (401) 723-7100 - Fax (401) 723-6866

LIGHT STANDARD BASE



ELEVATION

APPROX. WEIGHT: 2,600 LB

STANDARD SPECIFICATIONS

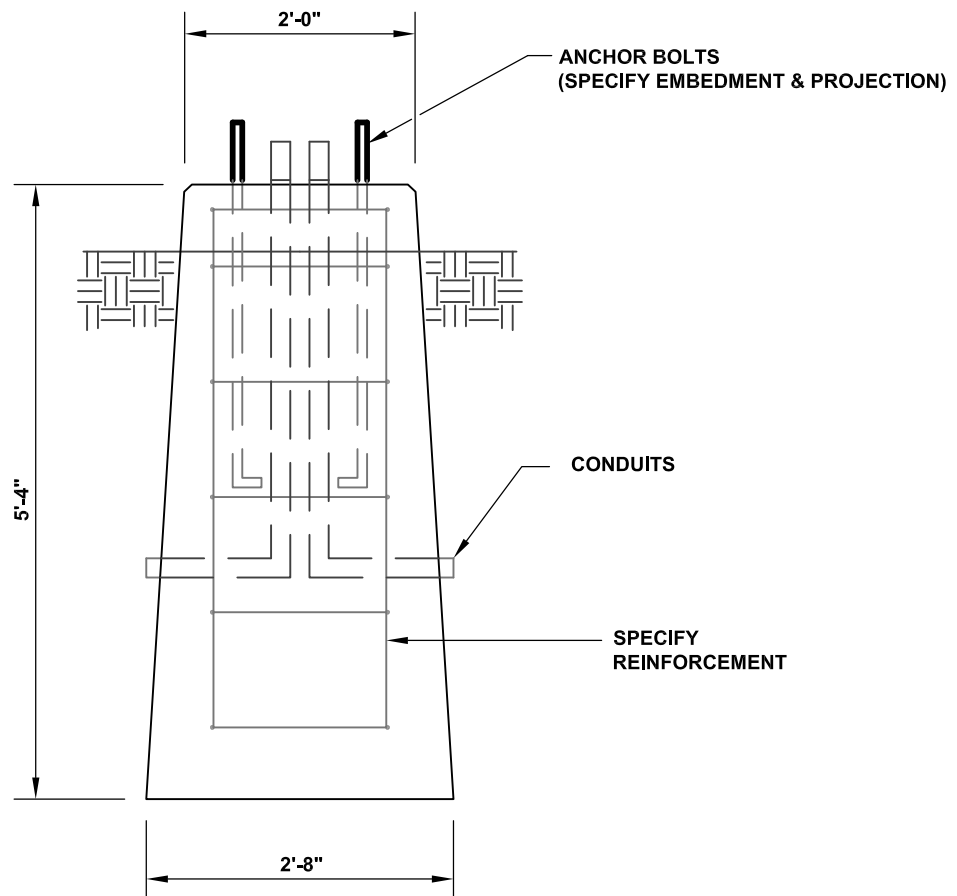
1. MINIMUM CONCRETE COMPRESSIVE STRENGTH $f'_c = 3,500$ PSI.
2. DESIGN & DETAILING CODE: ACI318 (UNLESS OTHERWISE SPECIFIED).
3. REINFORCEMENT: ASTM A615 GRADE 60, MINIMUM 3" COVER.
4. STEEL FORM FINISH.
5. CONDUIT & EMBEDMENTS AS REQUIRED.
6. ANCHOR BOLTS, PATTERN, & CONDUIT FURNISHED BY CONTRACTOR.
7. CONFORMS TO RI STANDARD 18.1.

NPCA
CERTIFIED PLANT

DURASTONE

150 HIGGINSON AVENUE - LINCOLN, RI 02865 - Phone (401) 723-7100 - Fax (401) 723-6866

SHALLOW TRAPEZOIDAL LIGHTBASE



ELEVATION

APPROX. WEIGHT: 4,500 LB

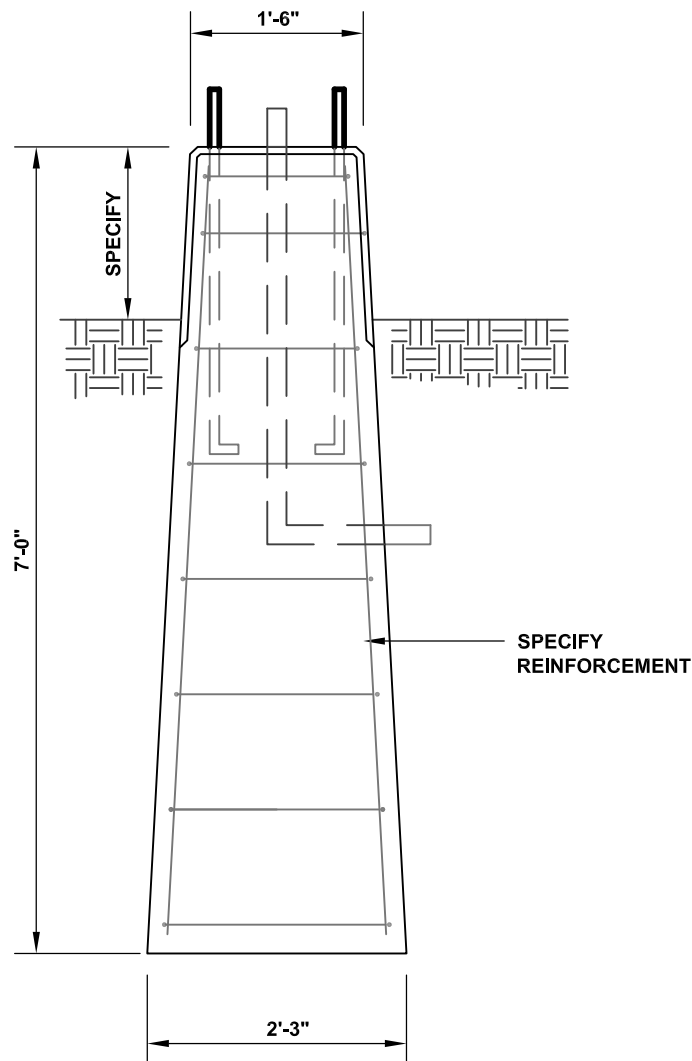
STANDARD SPECIFICATIONS

1. MINIMUM CONCRETE COMPRESSIVE STRENGTH: $f'_c = 3,500$ PSI.
2. DESIGN & DETAILING CODE: ACI318 (UNLESS OTHERWISE SPECIFIED).
3. REINFORCEMENT: ASTM A615 GRADE 60, MINIMUM 3" COVER.
4. SMOOTH FORM FINISH.
5. CONDUIT & EMBEDMENTS AS REQUIRED.
6. ANCHOR BOLTS AND CONDUIT FURNISHED BY CONTRACTOR

DURASTONE

150 HIGGINSON AVENUE - LINCOLN, RI 02865 - Phone (401) 723-7100 - Fax (401) 723-6866

TRAPEZOIDAL LIGHTBASE



ELEVATION

APPROX. WEIGHT: 3,900 LB

STANDARD SPECIFICATIONS

1. MINIMUM CONCRETE COMPRESSIVE STRENGTH: $f'_c = 3,500$ PSI
2. DESIGN & DETAILING CODE: ACI318 (UNLESS OTHERWISE SPECIFIED)
3. REINFORCEMENT: ASTM A615 GRADE 60, MINIMUM 3" COVER
4. SMOOTH FORM FINISH
5. CONDUIT & EMBEDMENTS AS REQUIRED
6. ANCHOR BOLTS AND CONDUIT FURNISHED BY CONTRACTOR